



2023

SNOHOMISH COUNTY
ANNUAL
REPORT

WHAT IS SNOHOMISH COUNTY LEAD?

Snohomish County LEAD began in 2020 after we recognized an ever-present problem in our community: individuals with behavioral health issues cycled again and again through the criminal legal system leaving community members frustrated and police overburdened while the health conditions of many vulnerable individuals remained unaddressed. To address this, Snohomish County Prosecuting Attorney's Office received a grant from Washington Health Care Authority to start LEAD (Law Enforcement Assisted Diversion) as a pilot project.

LEAD gives police officers and prosecutors the ability to divert individuals away from jail when committing low-level misdemeanors that may stem from mental illness, substance use and extreme poverty. They are instead connected to care through dedicated case managers who work to address the root cause of the person's challenges and connect them to appropriate care, navigating the complicated web of social services by walking alongside them.

LEAD recognizes that substance use disorders and mental illness are public and social health issues that affect individuals and communities. The criminal justice system cannot adequately respond to these challenges.

Snohomish County LEAD is committed to keeping the community and our stakeholders informed. This report is one of our efforts to fulfill that commitment. We welcome your comments and questions.

A WORD FROM THE DIRECTOR



ASHLEY DAWSON, LICSW
PROGRAM DIRECTOR

As we continue to grow our presence in Snohomish County, we have spent the last year working to ensure we create and foster strong relationships with not only our clients but many of our community partners. While the county spans a wide range of land, it is not uncommon for agencies to have clients in common who have interacted with a variety of our local systems. We know that care coordination and cross collaboration among providers is key to ensuring our clients receive whole-person care that helps them not just achieve their goals but experience lasting change in their lives.

Here, this now extends into the courts where we have established a consistent presence at the municipal level so LEAD can be offered to any person who may be interested in and eligible for the services and support of long-term case management. By providing a liaison to courts, questions about LEAD can be answered in real time, benefiting our clients as they tackle compounding legal issues while also introducing LEAD as a possible resource to people who are not yet engaged in our program. This continues our mission to be field-based, achieve our multi-sector commitment to the entire county and respect the autonomy of our clients by ensuring they have equitable access to LEAD when they are ready.

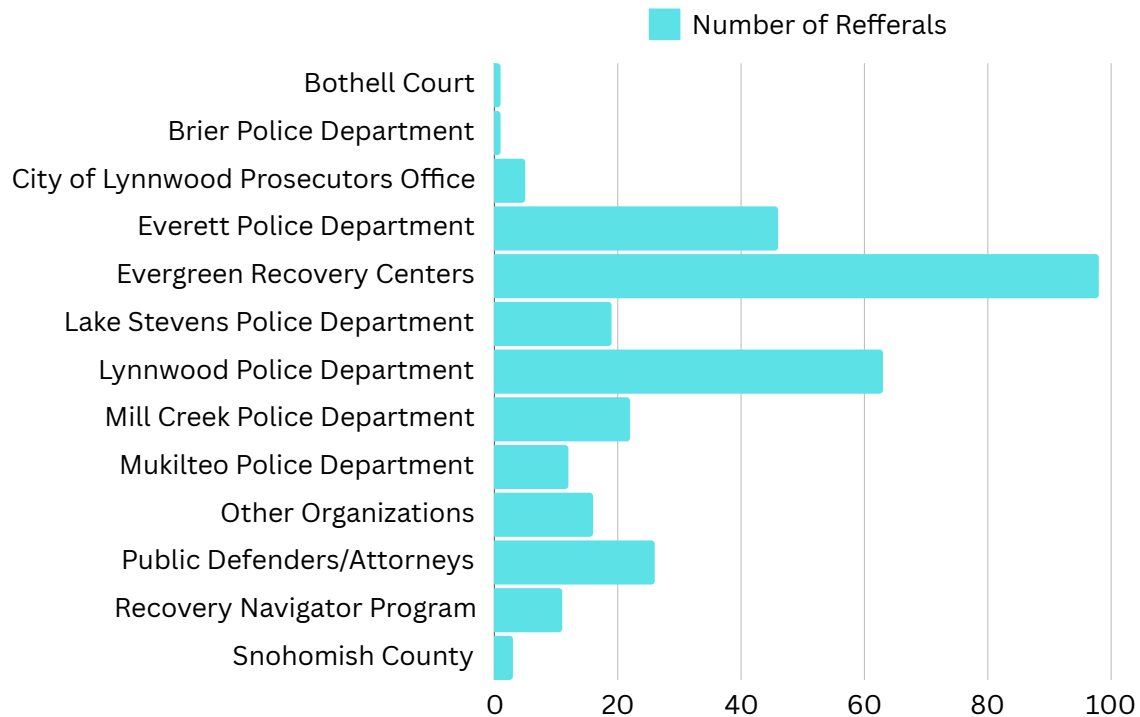
LAW ENFORCEMENT PARTNERS

Bothell Police Department
Brier Police Department
Everett Police Department
Lake Stevens Police Department
Lynnwood Police Department
Mill Creek Police Department
Mountlake Terrace Police Department
Mukilteo Police Department

COMMUNITY PARTNERS

Carnegie Resource Center
Community Health Center
Downtown Everett Association
Esther's Place
Everett Gospel Mission
Hands of HOPE, Northlake Christian Church
Hope 'N Wellness
Feldman & Lee
Ideal Option
Jean Kim Foundation
Snohomish County PDA
South County Fire
Zachor, Stock & Krepps Legal

2023 REFERRALS PER SOURCE



PREBOOKING VS. SOCIAL CONTACT

21.8%
PREBOOKING

78.2%
SOCIAL CONTACT

Referrals made in 2023 fall into one of two categories:

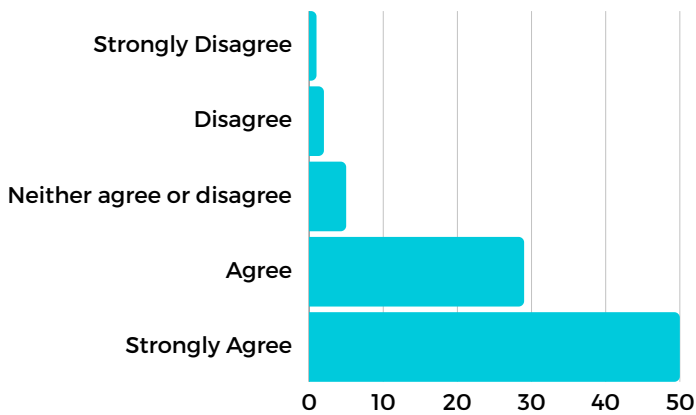
PreBooking: The participant was arrested and instead of booking to jail for the misdemeanor crime, they were diverted by the officer into to the LEAD program.

Social Contact: The participant was contacted by police and was clearly in need of services and support related to behavioral health issues and extreme poverty, so the officer referred them to LEAD.

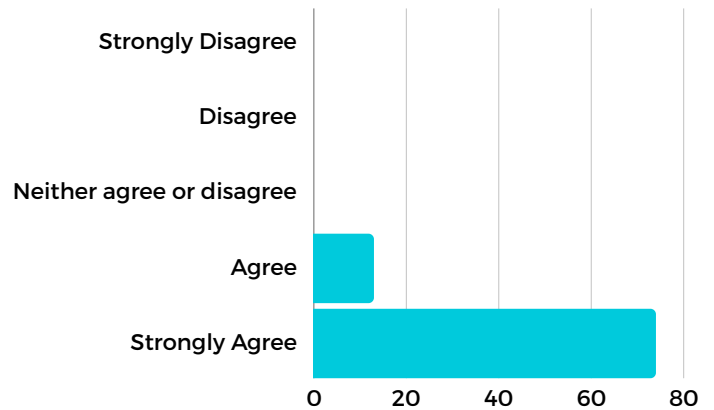
CLIENT FEEDBACK

87 clients were asked to respond to the below statements with one of five options: strongly disagree, disagree, neither agree or disagree, agree, strongly agree.

I'M SEEING POSITIVE CHANGES IN MY LIFE

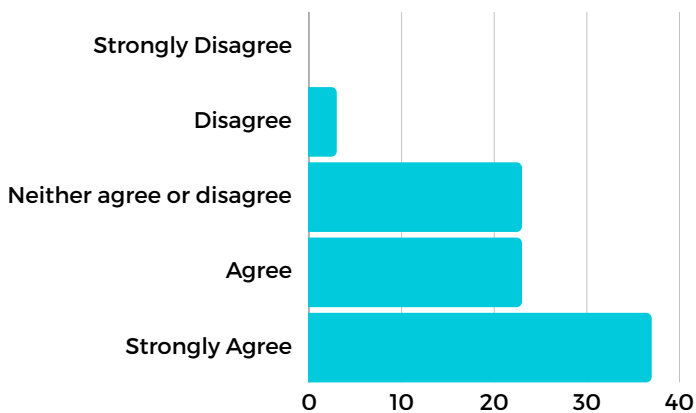


I'M SATISFIED WITH THE TEAM

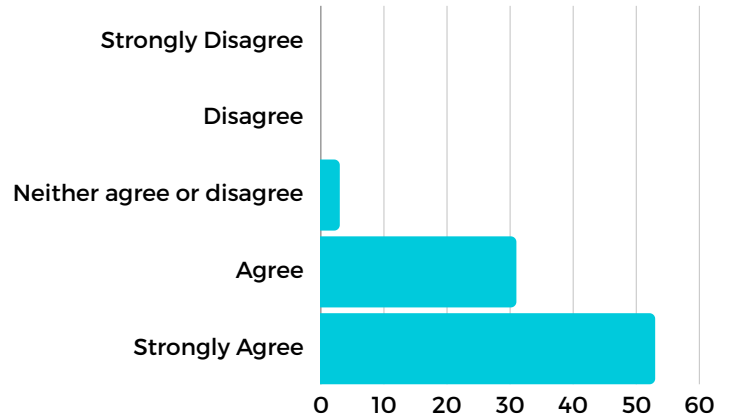


"I'm on top of my legal issues, not as afraid of the police, I smile more, I like the LEAD program and I'm in my own place." - LEAD Client

I'M HAVING FEWER ARRESTS/CITATIONS



LEAD IS HELPING ME WORK TOWARDS MY GOALS



CASE MANAGEMENT

We contract with Evergreen Recovery Centers for case management. Case managers provide direct services to a caseload of approximately 25 individuals. Case managers provide screening, outreach, long-term engagement and supportive services for participants through intensive case management activities and collaboration with LEAD partners, service providers, housing providers and other community organizations.

Our field staff includes:

4 Case Managers

1 Recovery Navigator

2 Outreach Case Managers

1 Case Management Supervisor

1 Senior Staff

1 Senior Case Manager



ERIKA FARRIS
LEAD SENIOR STAFF

“I truly believe that everyone is more than the worst thing they’ve ever done, and this job has only proved that to be true. As a case manager I’ve had the pleasure of experiencing some of the highest of highs with my clients like getting the key to their first apartment after years of homelessness, reaching milestones in their sobriety, or reconnecting with their family after decades of no contact. I’ve also experienced some of the lowest of lows like having clients pass away, overdose, lose a legal battle, or just struggle physically and mentally due to their situations. While there have been some devastating losses, I still look forward to showing up for my clients each day in ways they never thought possible. I get to meet them where they’re at and take steps beside them, no matter how big or small, until they finally see for themselves that they are worthy of so much more.”

CLIENT STORY

R.O. was referred to the LEAD program in October 2022. At the time of her intake, R.O. was homeless and staying in the streets most nights. From time to time, she was able to stay at her son's house, but it was not a safe space for her. Upon entry into the program, R.O. had started the process of applying for a housing voucher through the YWCA. Unfamiliar with the process, R.O. was unsure what her next steps should be, or how to utilize the voucher. During their first meeting, R.O.'s case manager helped her reach out to YWCA and connected her with a rehousing navigator. Her case manager also helped her start the application process for two temporary housing programs in the area, with the hopes that R.O. could have a safe place to stay while she awaited a more permanent solution. A few weeks later, R.O. called her case manager stating that she was in a lot of pain and wanted to go to the hospital. R.O.'s case manager was able to take her, and after being admitted, it was discovered that R.O. had a tumor in her uterus. After a few tests, it was discovered that the tumor was cancerous. While it was a difficult journey, with the support of her case manager, R.O. was able to make the necessary appointments, receive treatment, and eventually have surgery to remove the tumor. R.O.'s case manager continued to support her in the follow-up appointments, and was even there for her when she learned the cancer had not spread post-surgery. Through it all, R.O. did not allow her diagnosis to hinder her process of moving forward and bettering her life. In her time with LEAD, R.O. was able to obtain a phone, open a bank account, and get dentures after going many years without any type of dental treatment. R.O. also eventually obtained permanent housing - which LEAD helped furnish. R.O. has reached a state of stability, is working to continue taking care of herself, and has ultimately come very far since that first encounter with LEAD just nine months ago.

-Submitted by a Snohomish County LEAD Case Manager

RECOVERY NAVIGATOR PROGRAM

The Recovery Navigator Program has continued to offer recovery-based information to people seeking services and support in 2023. With opioid related overdoses on the rise, (264 opioid related deaths reported by Snohomish County Health Department in 2023), our partnership with the Washington State Department of Health as a Naloxone provider has been a crucial part of what we do. An important aspect is training people in our community on how to use these overdose reversal medications, along with other important harm reduction measures. Overdose prevention and awareness have been, and will continue to be an important focus of our work.

- We handed out 750 kits of Naloxone in 2023
- There were 30 overdose reversals reported
- 59 participants were trained on overdose response

Along with supporting and educating our participants, a large part of RNP work focuses on breaking down the stigmas that exist in our larger community surrounding substance use disorder and homelessness. One of the ways we do this is by creating coloring pages (see example on next page) that are:

- Judgement free
- Thought provoking
- Honest
- Educational

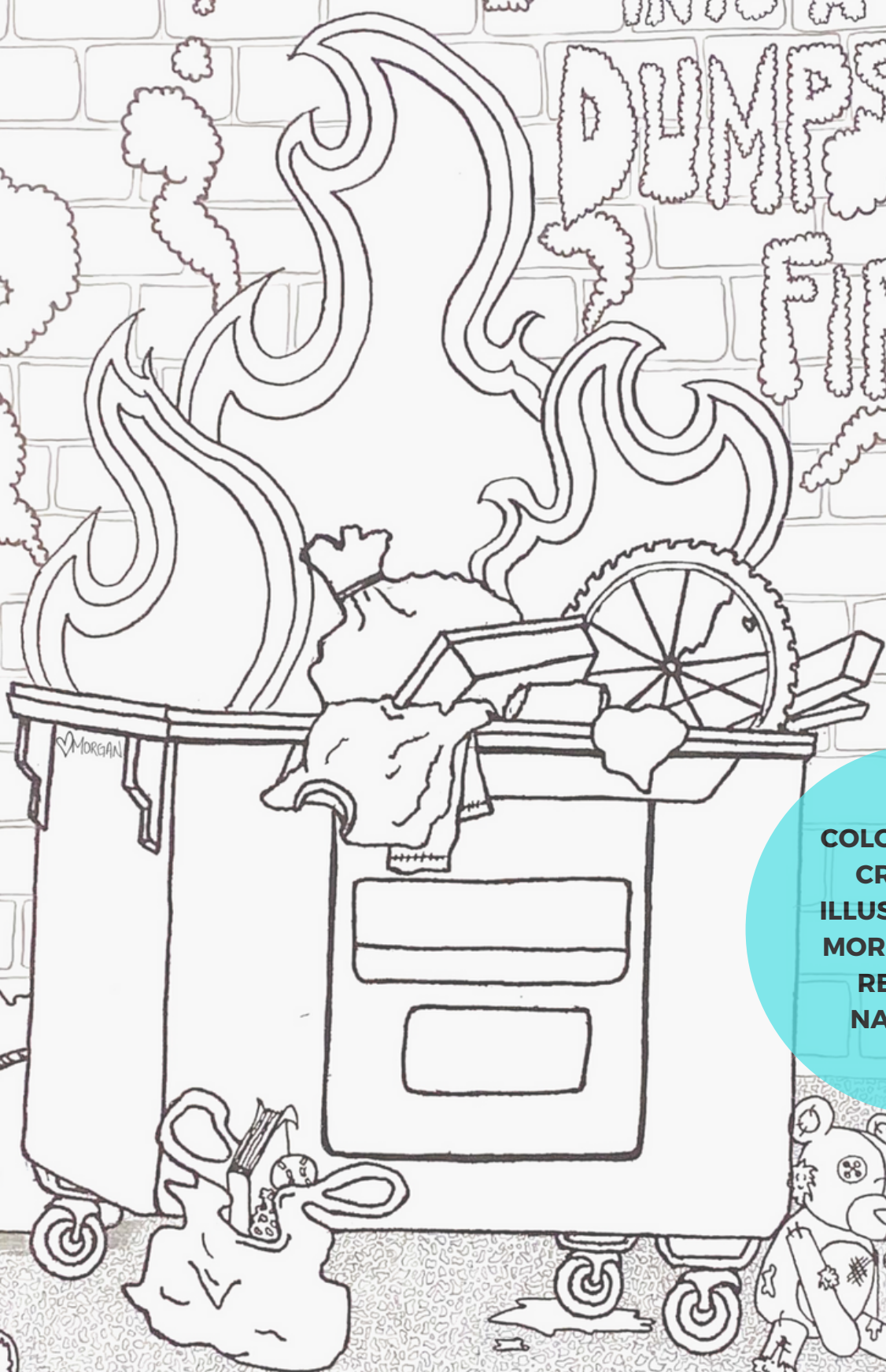
The RNP program also has an ongoing presence at county-wide tabling functions, sharing these educational materials and personal recovery stories, as well as distributing naloxone, to help raise awareness and end community stigmas. The RNP has accomplished a lot this past year and helped many participants to reach their goals.



“This past year I have felt very privileged to continue my work as a Recovery Navigator with the Snohomish County LEAD Program. Providing program participants with long term, intensive case management so they can reach their recovery goals continues to be the most rewarding aspect of my work. The successes we see by investing time, applying harm reduction techniques, and leading with compassion continue to astonish and inspire me.”

-Morgan Webb, C.P.C.
Recovery Navigator Program Coordinator

HAS ADDICTION TURNED YOUR LIFE INTO A DUMPSTER FIRE?



**COLORING PAGE
CREATED &
ILLUSTRATED BY
MORGAN WEBB,
RECOVERY
NAVIGATOR**

A Recovery Navigator Can Help.

Call/Text 425-508-2370



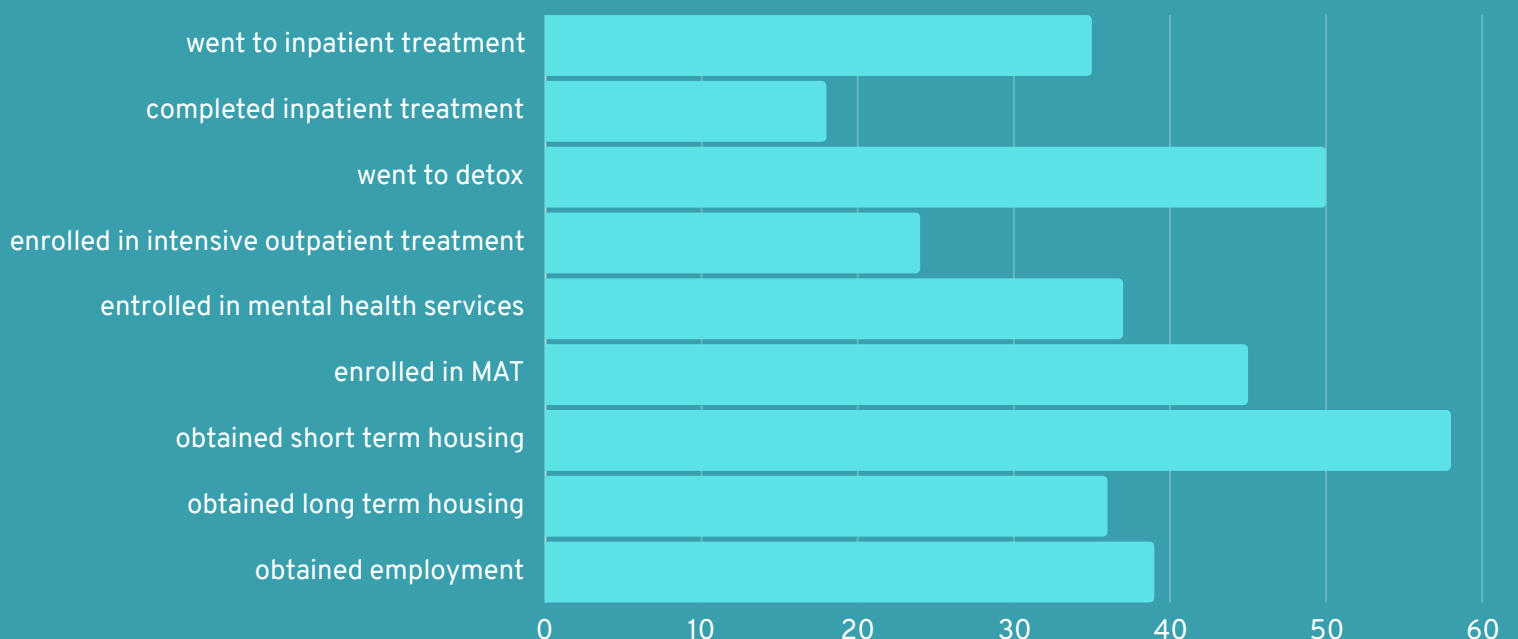
OUTCOMES

313 participants were served in 2023. This number includes new referrals and existing clients.

Staff recorded **11,925** encounters with participants which include in person visits, texts, phone calls, emails and care coordination.

31 clients re-engaged in LEAD in 2023. A re-engaged client is one who has previously been referred to LEAD, exited the program for a period of time and then was re-referred. We often find that clients find more success at the time of re-engagement because they self-initiate contact at a time they feel ready to work on their goals.

NUMBER OF CLIENTS CONNECTED TO SERVICES BY TYPE



FUNDING

Washington Health Care Authority	\$1.62 million over 23 months
North Sound BH-ASO	\$500,000 a year
Bureau of Justice Assistance COSSAP	\$400,000 a year

The Snohomish County LEAD Program is funded by 3 grants. The program will receive \$1.62 million over 23 months from the Washington Health Care Authority. The North Sound Behavioral Health Administrative Services Organization is providing \$500,000 a year to add elements of the Recovery Navigator Program to our existing LEAD model. The Bureau of Justice Assistance Comprehensive Opioid, Stimulant, and Substance Abuse Program (COSSAP) has committed to providing \$400,000 a year for 3 years to be used for the expansion of our program.

PLANS FOR THE FUTURE

Growth: Our goal is to expand into north and east Snohomish County, areas covered by Snohomish County Sheriff's Department and local municipal courts.

Community Referrals: As capacity allows, we will continue to bring in community partners so people who access services through local social service providers will also be able to be referred to LEAD for additional support.

Housing Opportunities: With continued funding, we hope to create relationships with existing housing providers to find new opportunities for our clients to access short and long term housing.

Community Awareness: We are developing a recorded training for our new law enforcement partners as well as a multimedia video that showcases our story and paints a clear picture of our unique work in Snohomish County.

“As a patrol officer, I used LEAD multiple times to refer low-level crimes and even for those who didn't commit any crime but just needed help. Officers have a unique opportunity to speak to individuals on the streets and make a difference in their lives. LEAD is an incredible resource available to us and I am very pleased with how quick the response time is. All of the staff works with me to find the best solution even if LEAD isn't for them. I appreciate all their efforts and genuine care for people. “

-Officer Maryam McDonald- Lynnwood Police Department



SNOHOMISH COUNTY
Law Enforcement Assisted Diversion



Phone Number

425-977-9946



Email Address

ashley.dawson@leadbureau.org



Website

www.snohomishcountylead.org



Instagram

@snocolead



Facebook

facebook.com/snohomishcountylead